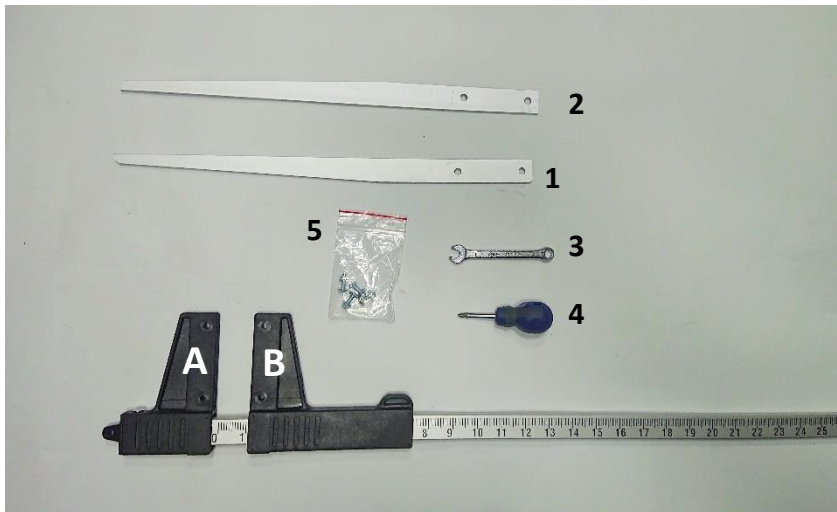




User manual how to assemble Codimex C calipers

Codimex calipers are characterized by the highest quality and scale resistant to abrasion.

The calipers are packed together with the jaws, screws and nuts intended for assembling. Producer also provides tools for an assembling of the Codimex calipers.



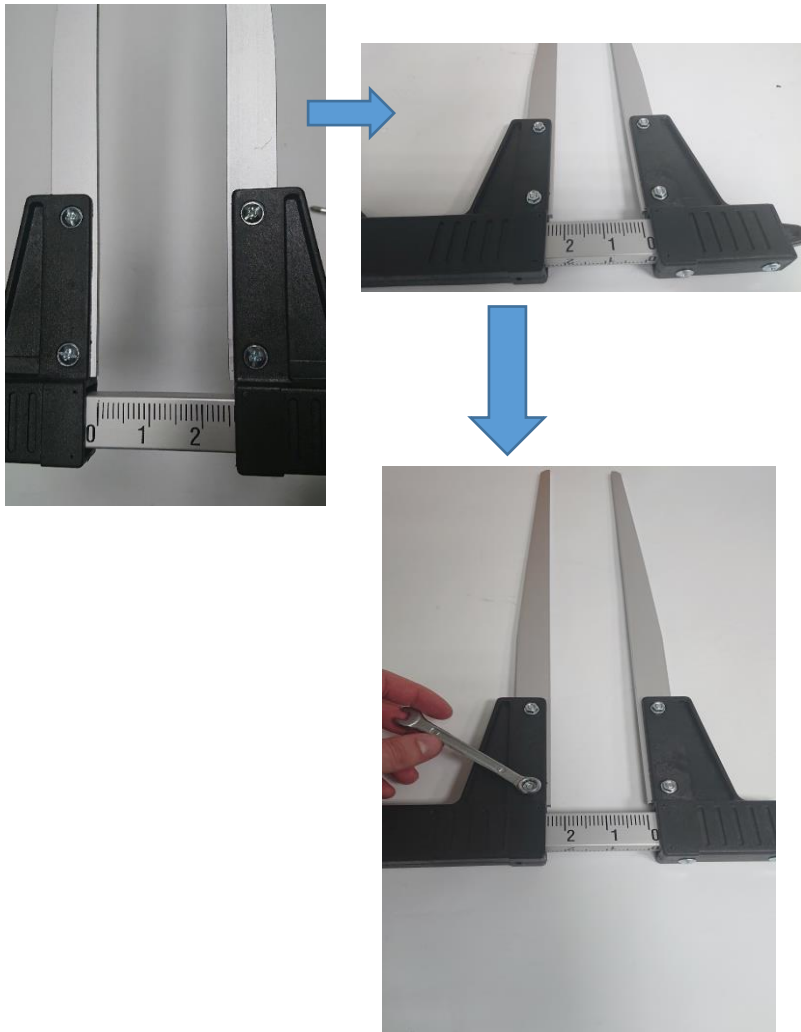
List:

- 1 – Left jaw
- 2 – Right jaw
- 3 – Flat wrench
- 4 – Screwdriver
- 5 – Set of screws and nuts

1. In order to assemble the calipers, please insert the aluminium jaws (No. 1 and No. 2) into plastic bodies (A, B) till the moment when all drillhole will be at the same position. The jaw marked as No. 1 should be inserted into the fixed arm (A) and the jaw No.2 should be inserted to the movable arm (B).

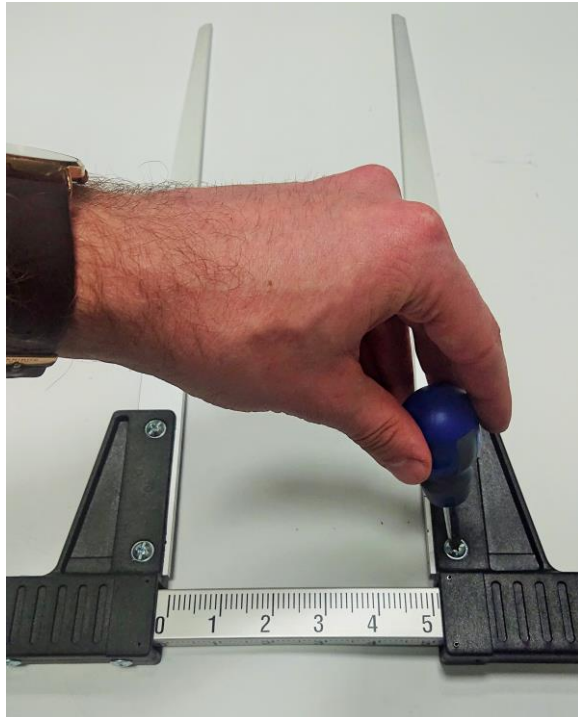


2. After placing the jaws into the plastic bodies, please insert four screws into the drillholes, put the nuts on the screws and use a flat wrench (3) to slightly tighten the nuts.



3. Before final tightening, move caliper jaws together to check if they adhere to each other on the entire length.

4. If everything is fine, use a screwdriver (4) to tighten the screws firmly.



5. Caliper is ready to use.