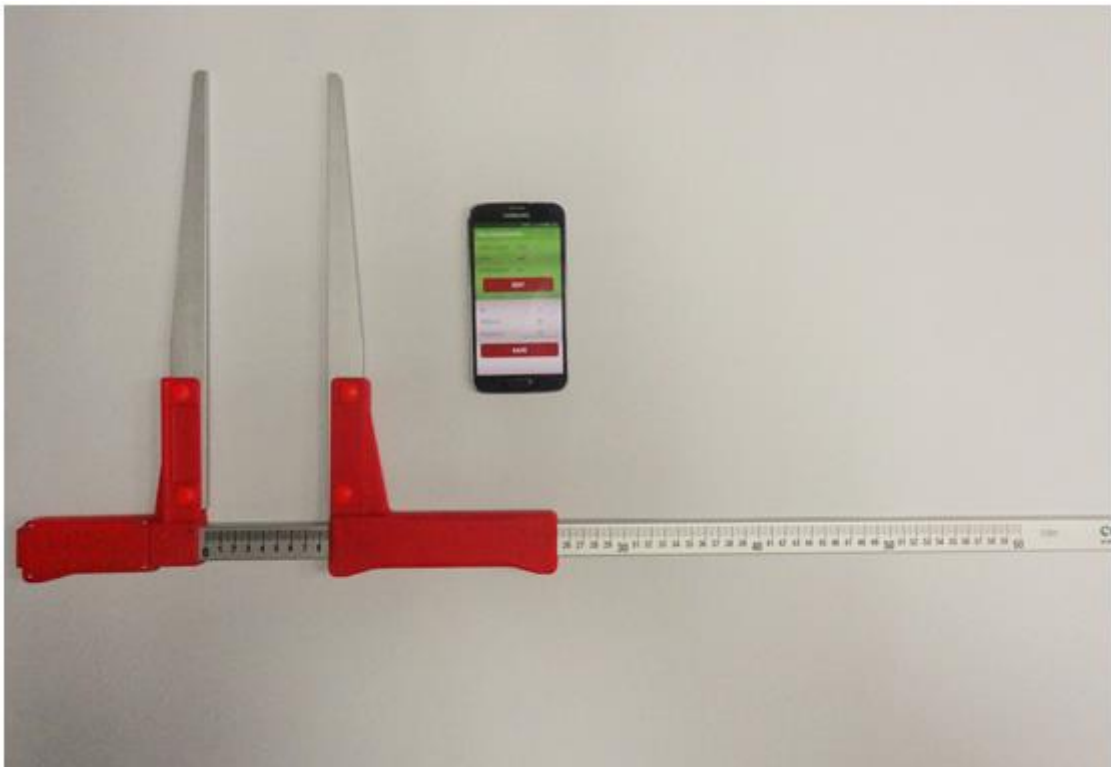


Set:

- Any manual caliper - Codimex
- Smartphone
- Application „Forest Notebook”

User manual



Contents page

1. Introduction	3
2. Smartphone or tablet	4
3. Application „Forest Notebook“	6
3.1 Application installation	6
4. Start in application.....	14
4.1 User registration	15
4.2 Preparing for measurements.....	16
5. Measurements	19
5.1 Summary, edition, deleting measurements	21
6. Export data	23
6.1 Location exported files	25
7. Activating full version.....	27

1. Introduction

Set is used to measure diameter at breast height standing trees, and the diameter of the lying tree.

Components of the kit:

1. Manual caliper Codimex
2. Smartphone or tablet (owned by user)
3. Application „Forest Notebook“

The manufacturer provides:

1. Manual caliper Codimex
2. Application „Forest Notebook“

On client request we deliver any smartphone (Android OS.) for an additional fee.

Measurement is doing by manual caliper CODIMEX, which result can be entered manually into the application „Forest Notebook“. The application can be installed on any device working with Android system.

In the application user can configure and edit following elements of measurement;

- base of species;
- base of assortments;
- location of the surface;
- units of measurements.

Data from the measurements are saved in the smartphone memory and can be exported as a CSV file. Export files from your smartphone can be made by sending via Bluetooth or e-mail, or copy directly through the USB cable to Your computer.

2. Smartphone or tablet

Application "Forest Notebook" is supported by smartphones and tablets running on Android operation system

Minimum requirements:

- Android: 4.0.3
- Processor: 1 core, 1 GHZ

Recommended requirements:

- Android: 4.4.X
- Processor: 4 cores 1.0 GHz or 2 cores 1.4 GHz
- RAM memory: 512MB

Smartphone or tablet can be mounted as follow:



- In the holder on the calliper



- In the belt with cover

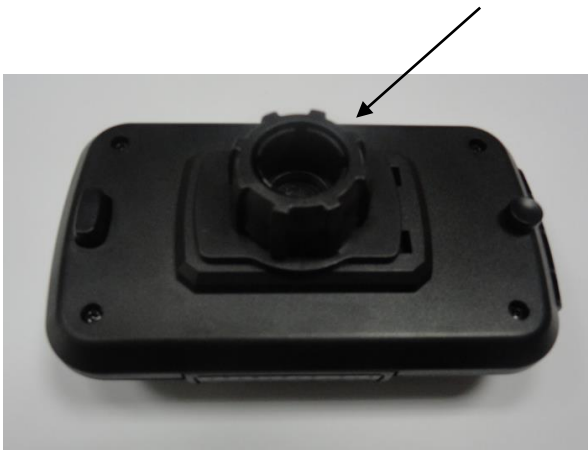


- In the case on the arm

Holder mounting instruction on calliper



Part of the holder is bolted to stable jaw of calliper by screw.



The holder should be placed as on the picture. Next move to the left plastic nut to unscrew almost to the end.



Prepared holder put on a circular element. Set the desired position and tighten the nut to the right to stabilize the handle.

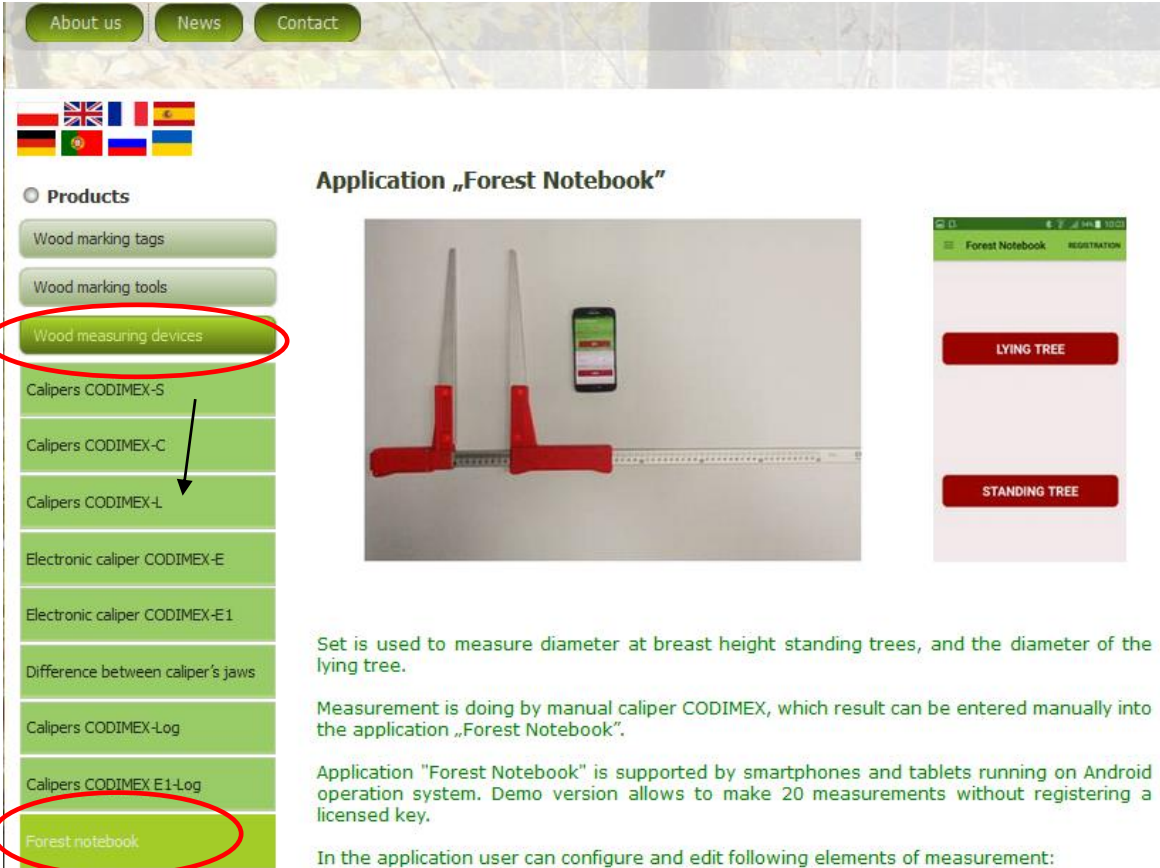
3. Application „Forest Notebook”

3.1 Application installation

Installation file "Forest Notebook" is included on pendrive and you can download the demo version from www.codimex.com.pl next page "Wood measuring devices" and then "Forest notebook"

Demo version allows to make 20 measurements without registering a licensed key. Below is a guide to download a file from a website and copied to the smartphone memory (also from pendrive) and install.

Manual of download file from web page



The screenshot shows the Codimex website interface. At the top, there are navigation buttons for "About us", "News", and "Contact". Below these are flags representing various countries. A "Products" menu is visible on the left, with "Wood measuring devices" circled in red. An arrow points from this menu item to the "Forest notebook" item at the bottom of the list, which is also circled in red. The main content area is titled "Application „Forest Notebook’" and features a photograph of a manual caliper and a smartphone. To the right of the photo is a screenshot of the application's registration screen, showing two red buttons labeled "LYING TREE" and "STANDING TREE". Below the photo, there is descriptive text in green: "Set is used to measure diameter at breast height standing trees, and the diameter of the lying tree. Measurement is doing by manual caliper CODIMEX, which result can be entered manually into the application „Forest Notebook’." and "Application "Forest Notebook" is supported by smartphones and tablets running on Android operation system. Demo version allows to make 20 measurements without registering a licensed key. In the application user can configure and edit following elements of measurement:".

1. Go to the web page www.codimex.com.pl, next section „Wood measuring devices” and then "Forest notebook".



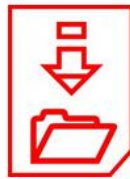
The application "Forest Notebook" allows to export data from all forest addresses into a one file (with the distinction between the method of measurement) and export from particular forest address.

Data from the measurements are saved in the smartphone memory and can be exported as a CSV file. Export files from your smartphone can be made by sending via Bluetooth or e-mail, or copy directly through the USB cable to Your computer

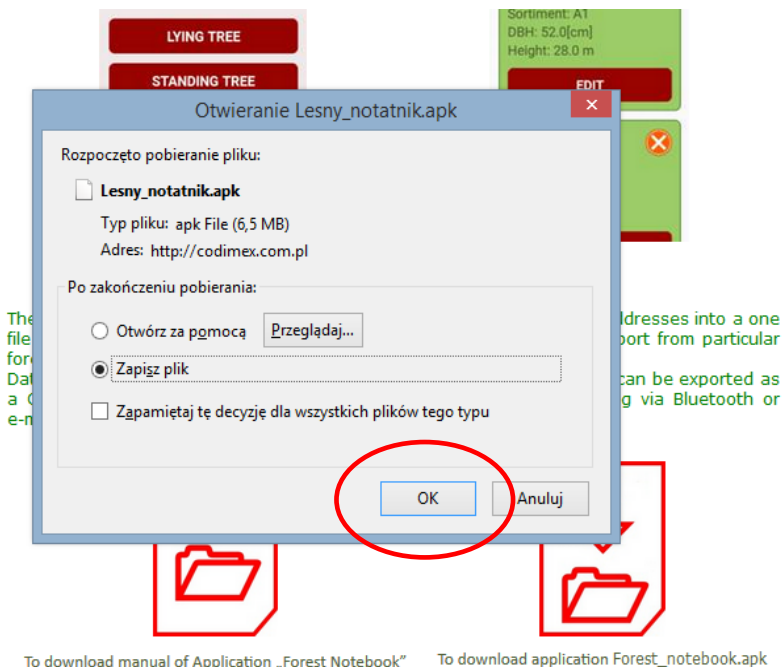
2. Scroll down page until you find the icon with the signature „To download application Forest notebook .apk” (marked with a red circle on the picture). Click on the icon.



To download manual of Application „Forest Notebook”



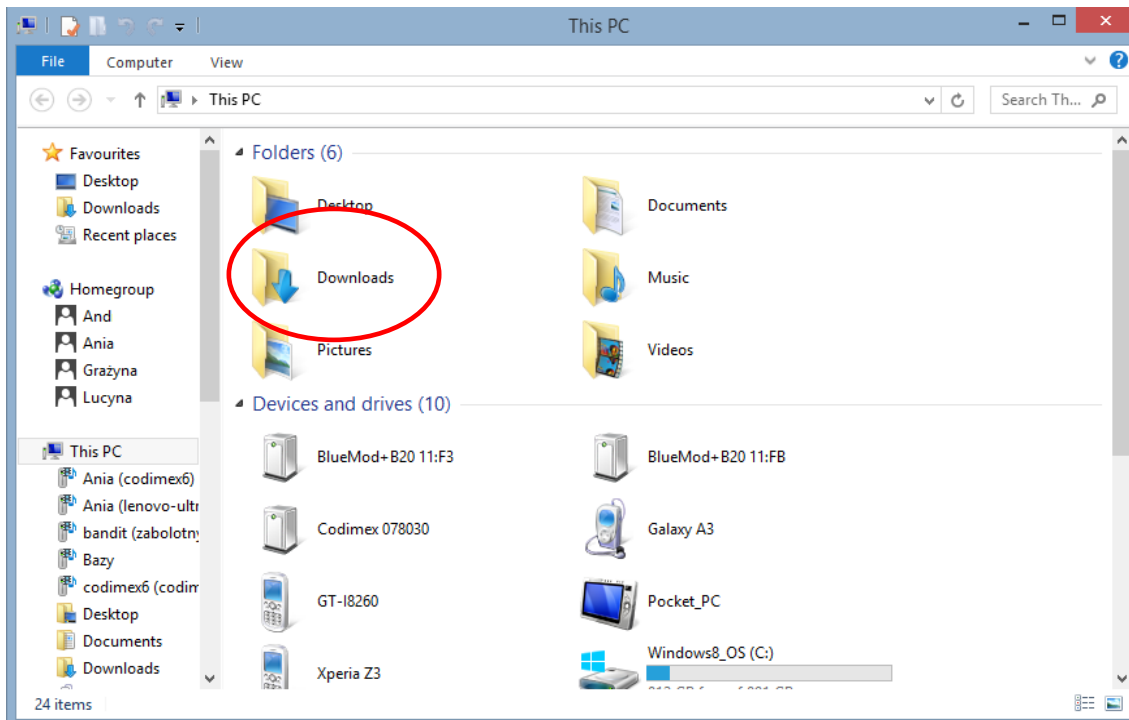
To download application Forest_notebook.apk



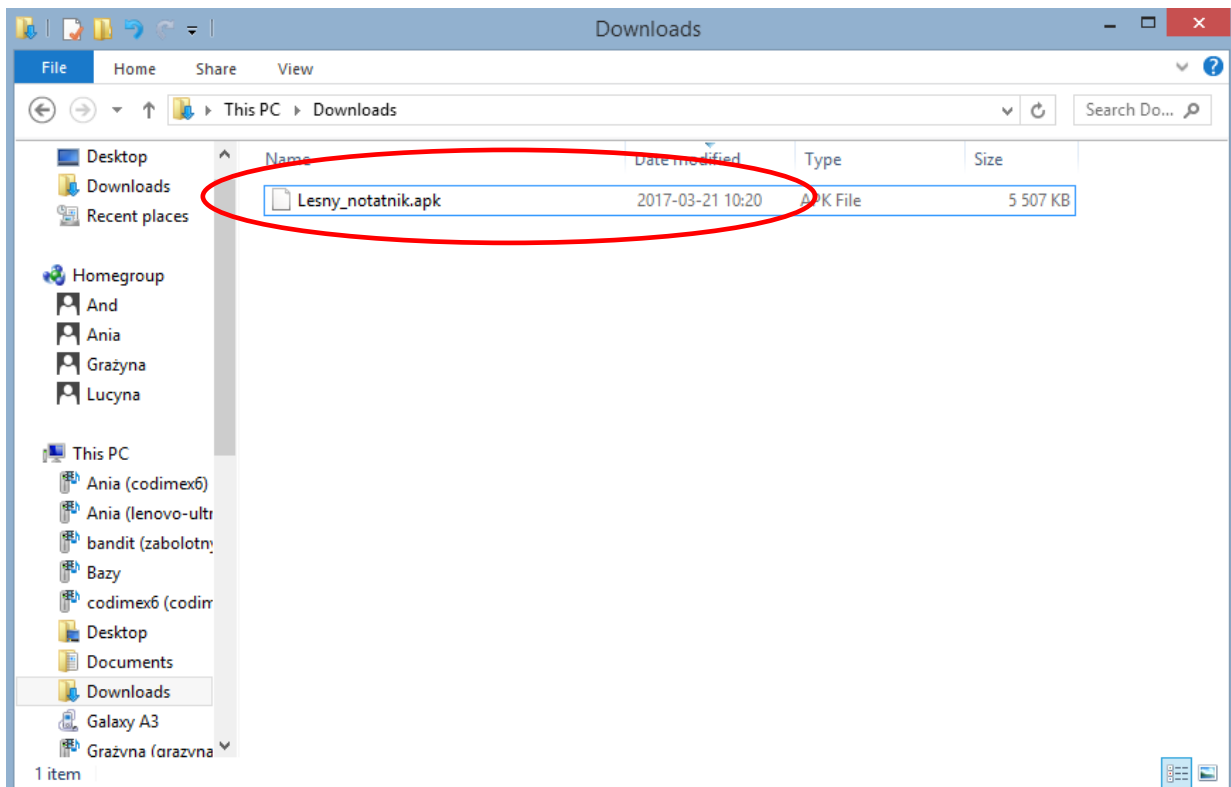
To download manual of Application „Forest Notebook”

To download application Forest_notebook.apk

3. In the next window, click "OK". If browser does not allow to choose location, the file is automatically saved in the folder "Downloads". If possible to choose location, save file in place easy to find, e.g. desktop.

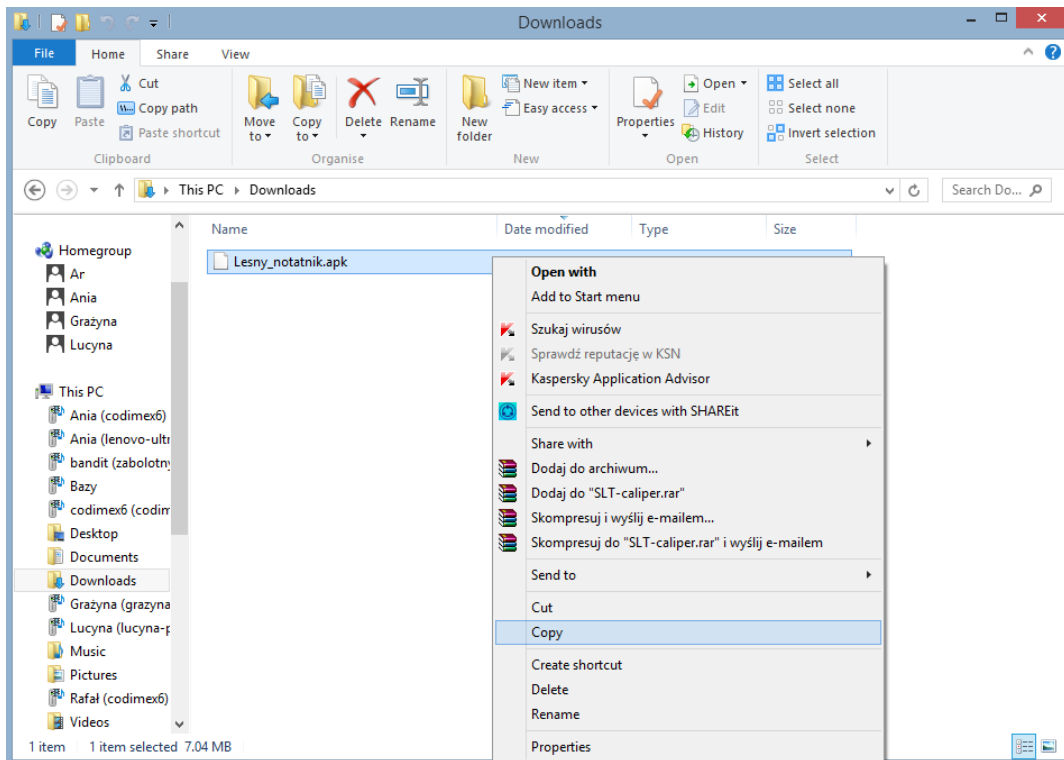


4. To enter the „Downloads” folder, open the icon "My Computer" on the desktop and then folder "Downloads".



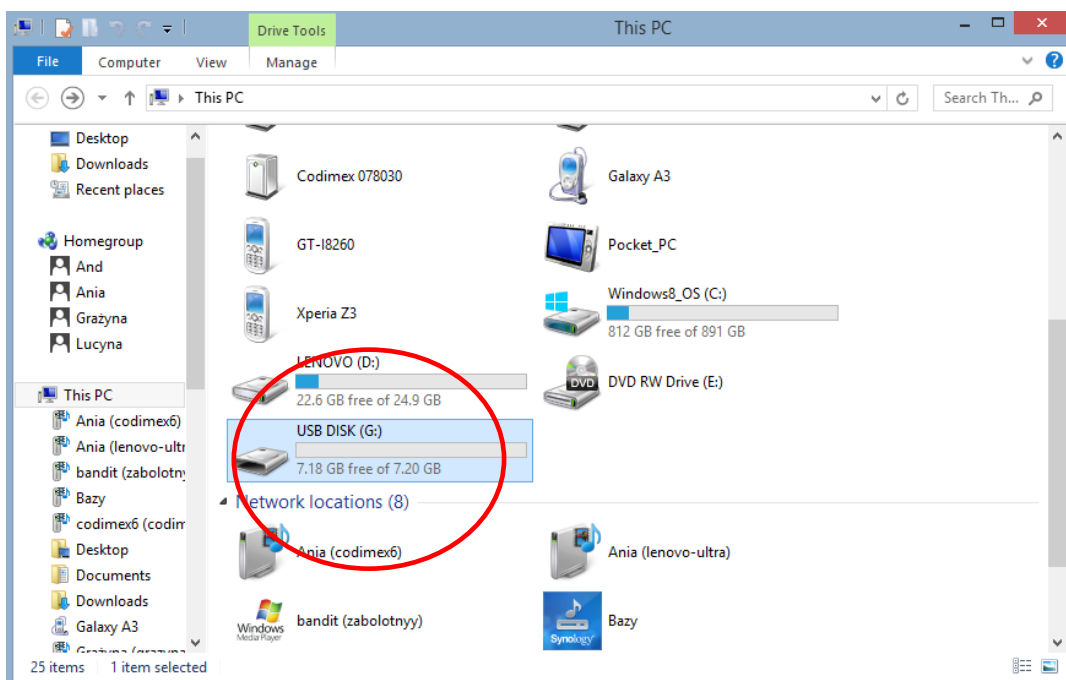
5. In folder „Downloads” find file „Lesny_notatnik”.

Manual of copy files and install applications in the smartphone memory



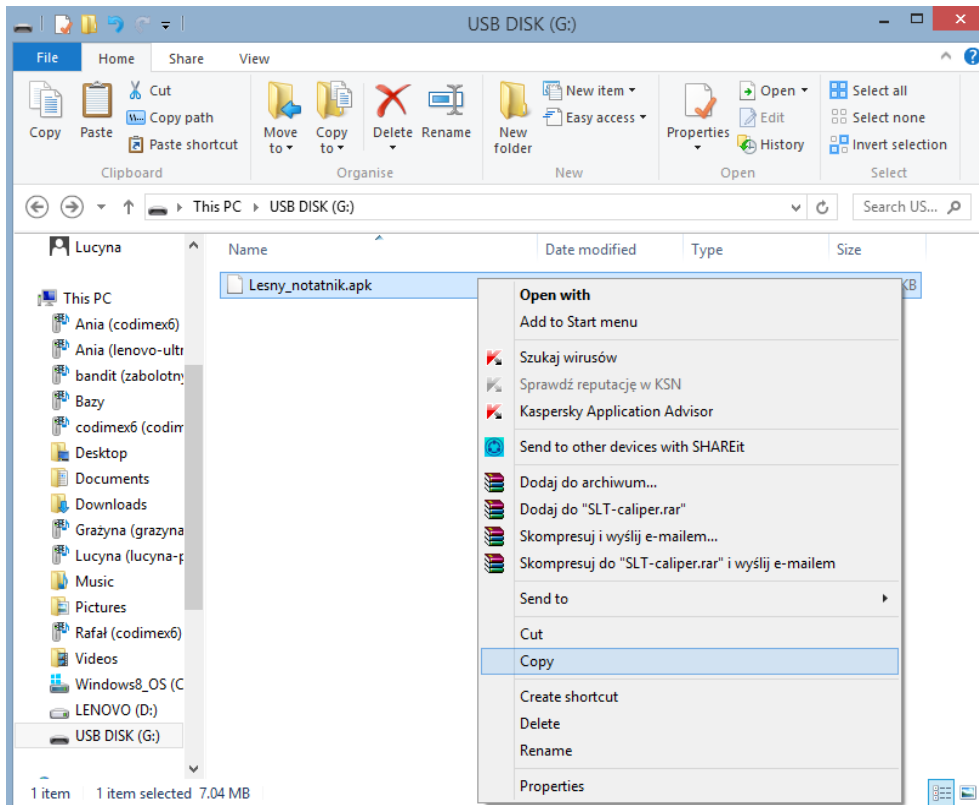
The file downloaded from the website.

1. Open the folder with downloaded file (according to the instructions given earlier).
Copy the file and close the window. Next steps from step 3



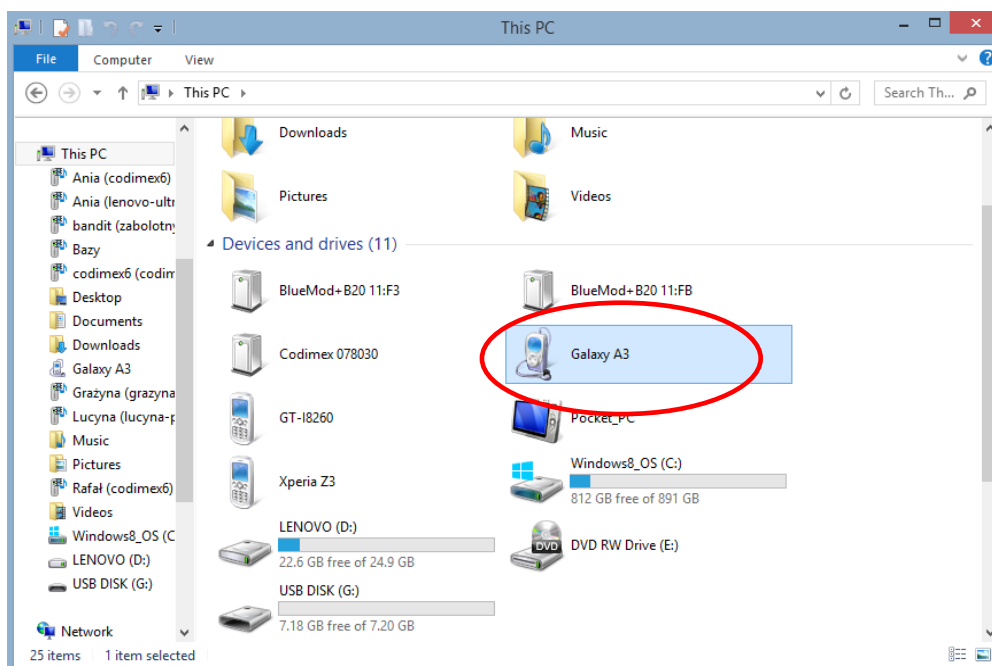
File on USB

1. On the desktop enter icon "My PC". Once opened, locate the USB icon, open it.



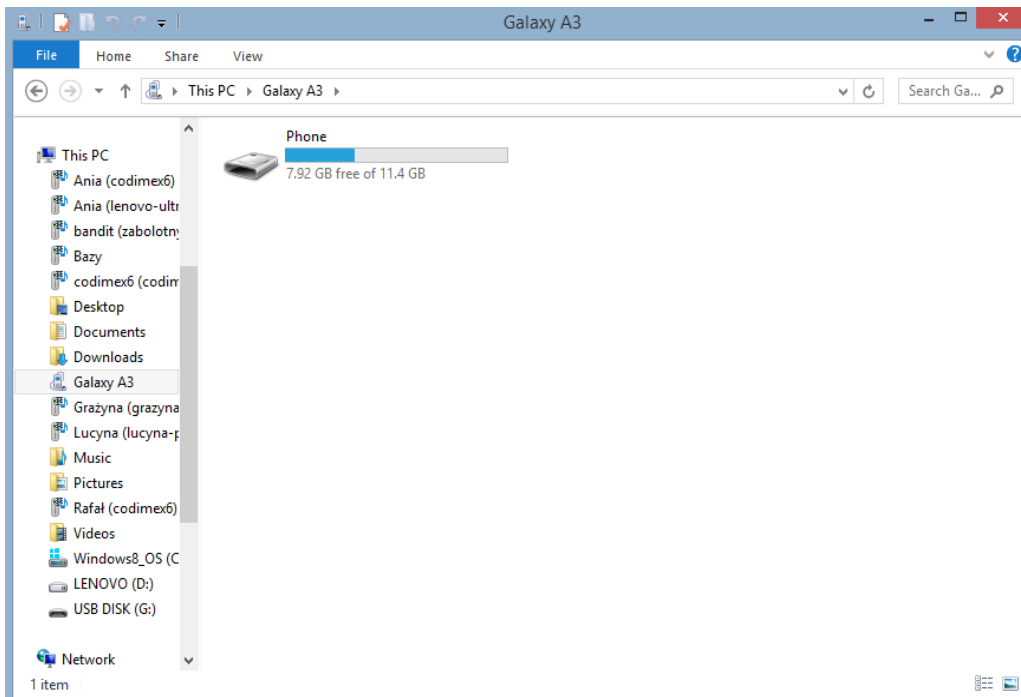
File on USB

2. In USB folder, find file "Lesny_notatnik.apk". Copy it, close the window.

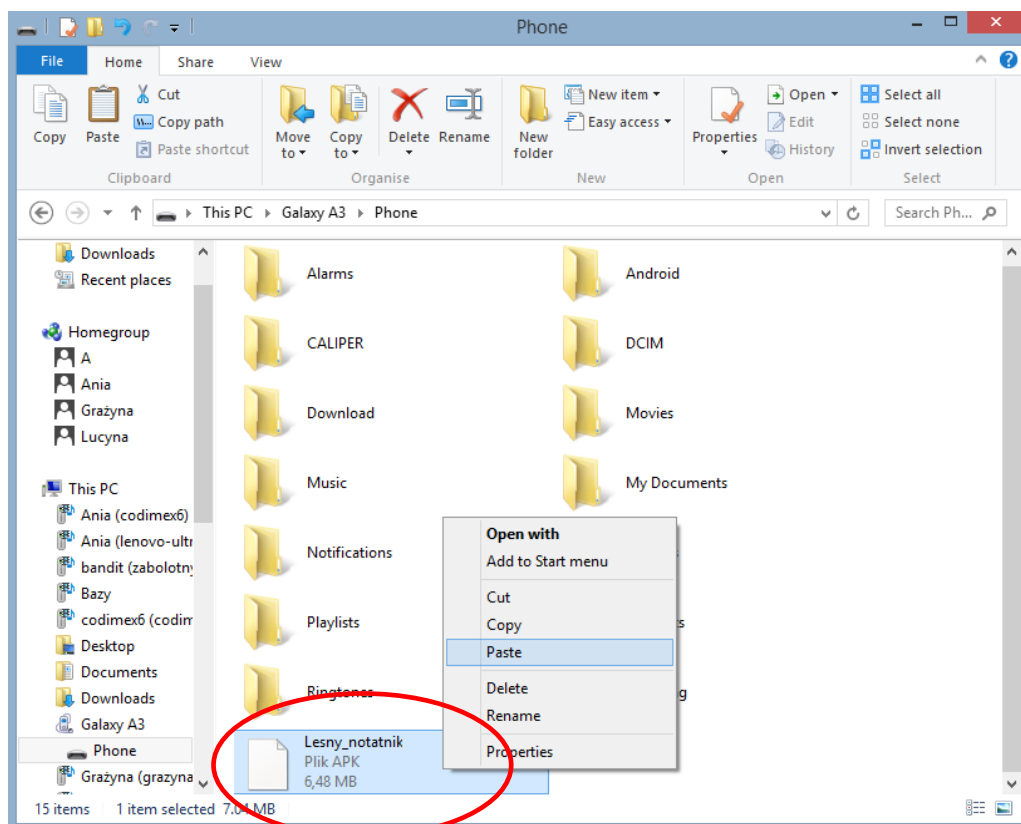


3. Connect smartphone to computer.

- Open on the desktop "My Computer."
- In "My Computer" folder find name of smartphone.
- Open the icon of smartphone.



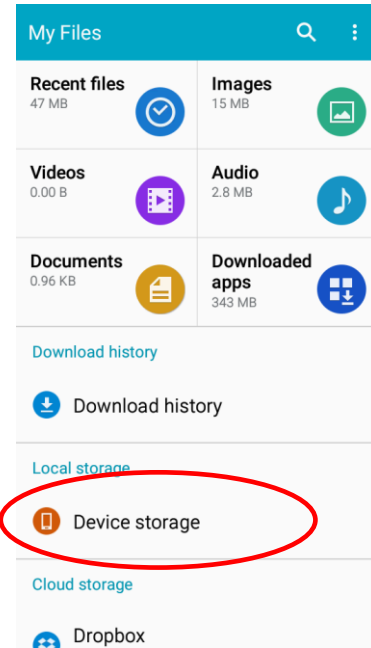
4. Enter the smartphone, open the icon "Phone"



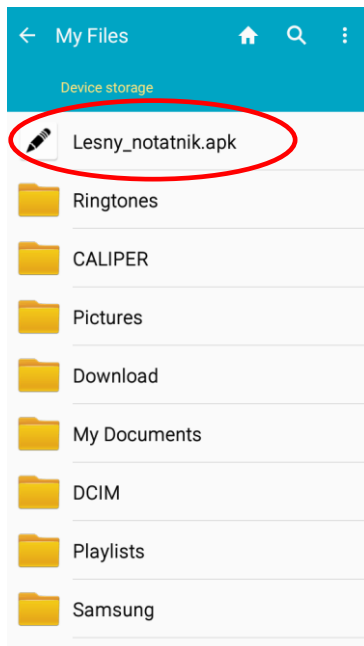
5. In the folder "Phone" paste installation file. Close the folder and disconnect the smartphone from the computer. Next steps on smartphone.



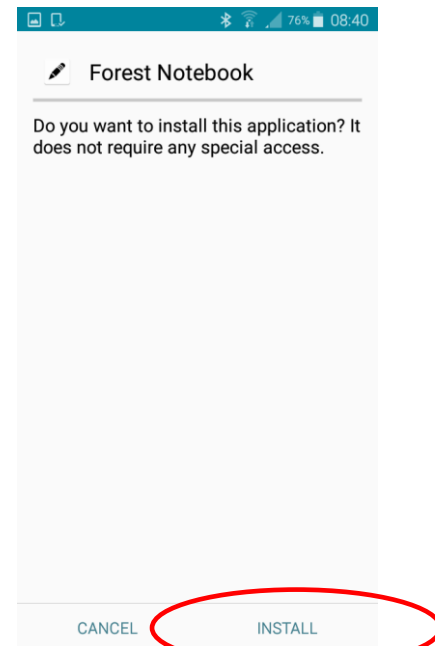
6. In main menu find the icon "My Files" and click on it



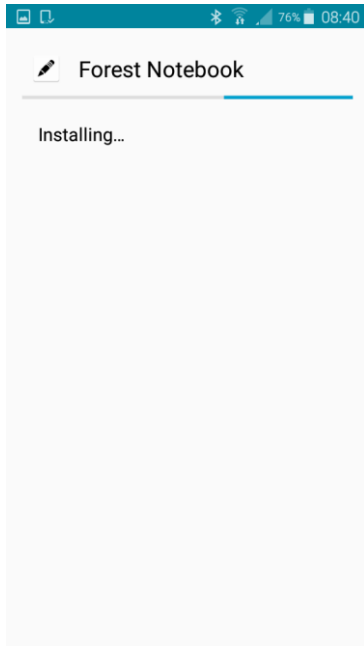
7. Click on „Device storage“



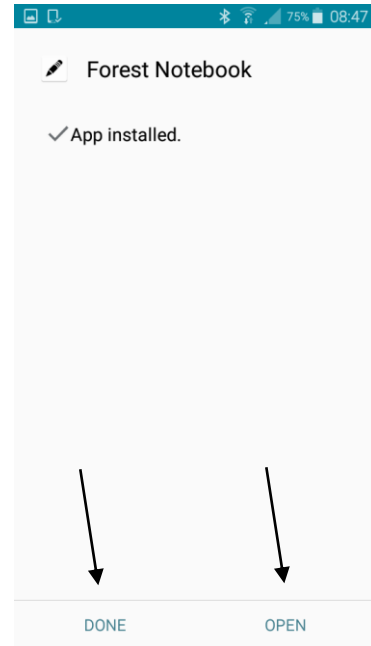
8. Find and click on icon „Lesny_notatnik.apk“



9. Click „INSTALL“



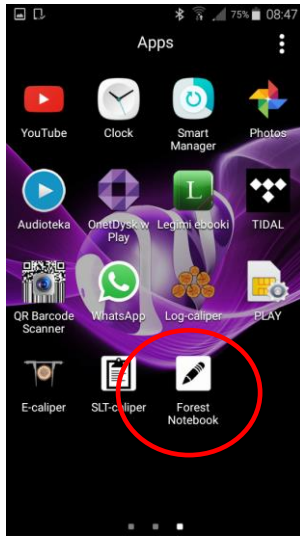
10. Automatic installation




11. Application installed

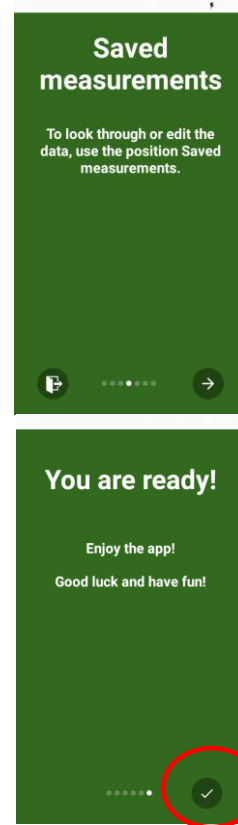
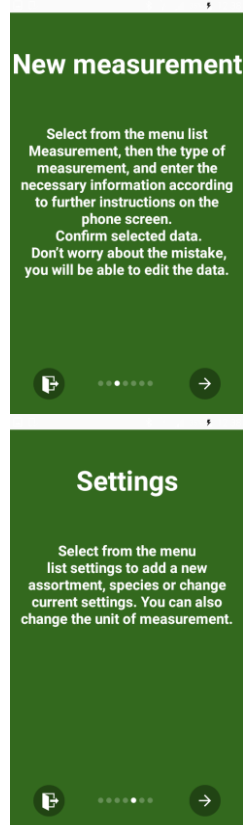
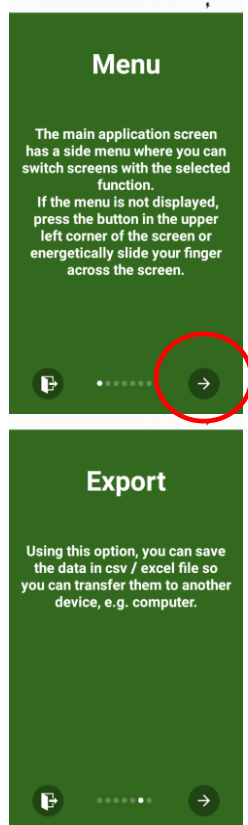
After installing the application, click "OPEN" if You want open application at once, or click "DONE" and find icon in smartphone menu.

4. Start in application



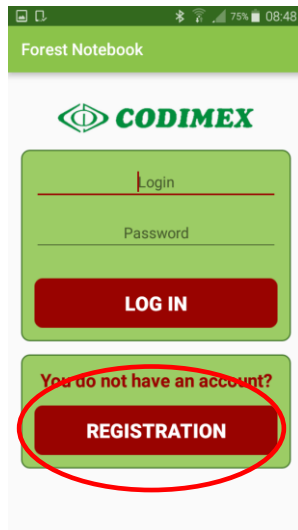
Application icon "Forest Notebook" find in the device menu, and then click to open the program.

When you turn on application first time, will get a brief introduction information. Please read it and move screens to the left or use circled arrow. In the last window, click icon  to proceed to registration/login.

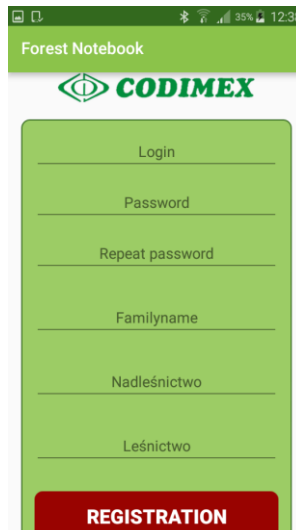


4.1 User registration

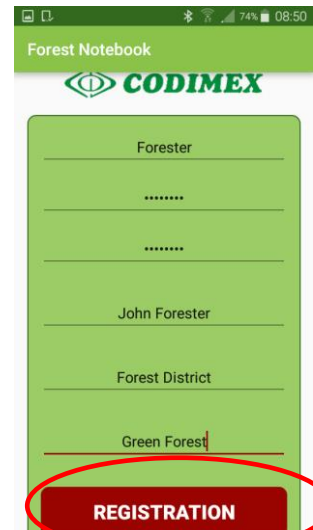
After read the introduction information, should to register a user. The registration process is described below.



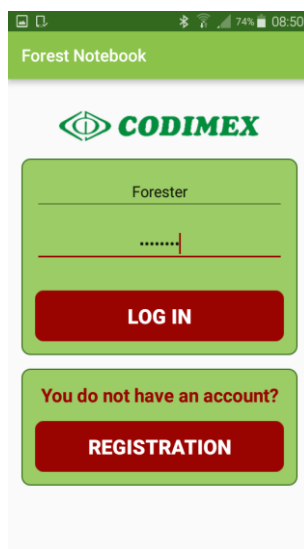
1. Click „REGISTRATION”



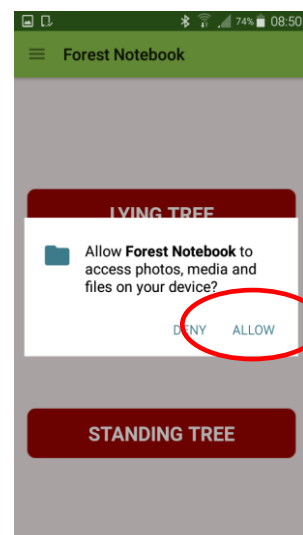
2. Complete the empty fields of user data



3. Example of filled data. To finish click "REGISTRATION"



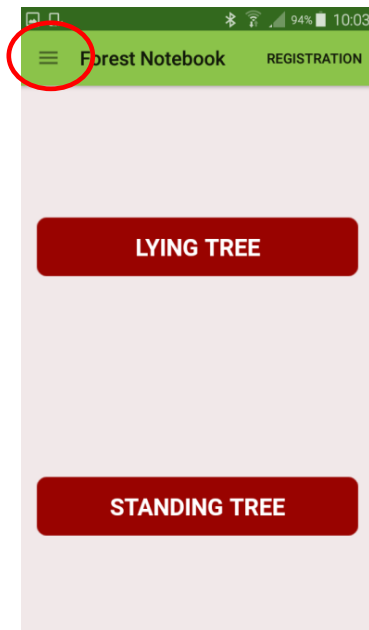
4. Enter login and password, used during registration



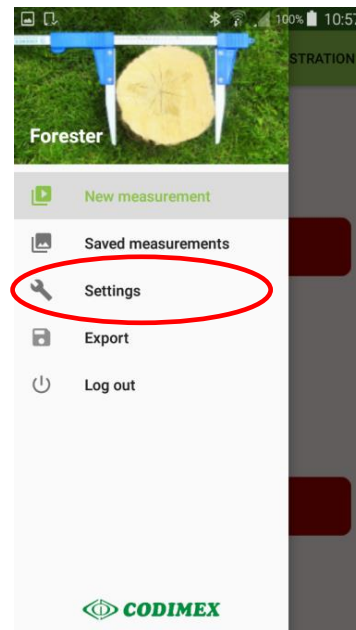
5. In the next window click "Allow"

4.2 Preparing for measurements

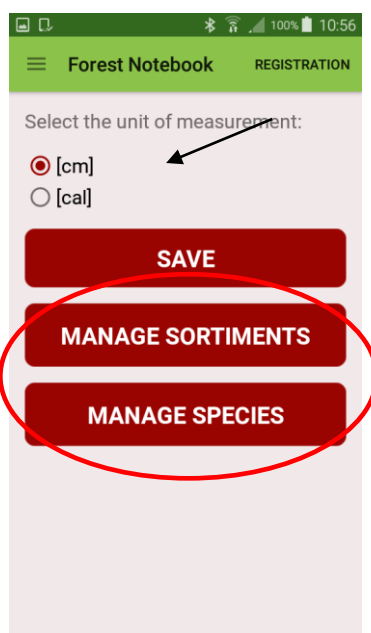
Please go to the settings and specify the units of measure, assortments and species, which will be measured. User must check available assortments and species. In application are only examples. If need other or more can add new. If some are useless can delete. To do this follow these steps:



1. Enter to side menu



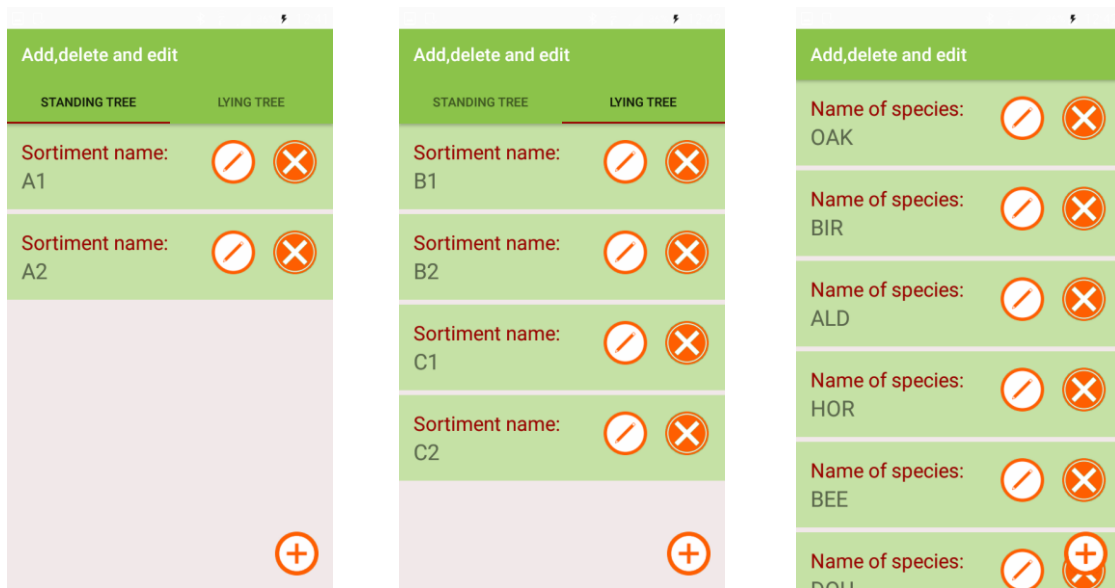
2. Enter to the tab "Settings"






3. Select unit of measure, click "SAVE".

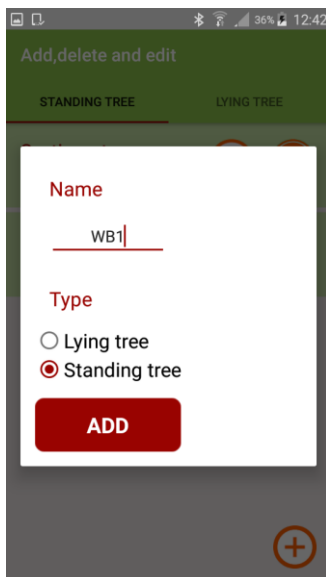
Add name of assortments (full name or shortcuts), click section "MANAGE SORTIMENTS"

Add name of the species, (full name or shortcuts), click section „MANAGE SPECIES“

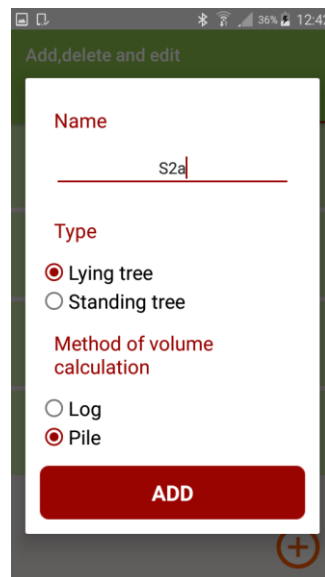


- 4. To add a new assortment / species use the symbol 
- To delete an existing assortment / species use the symbol 
- To edit an existing assortment / species use the symbol 
- To return to the previous window in the application use the button „back” on your smartphone.

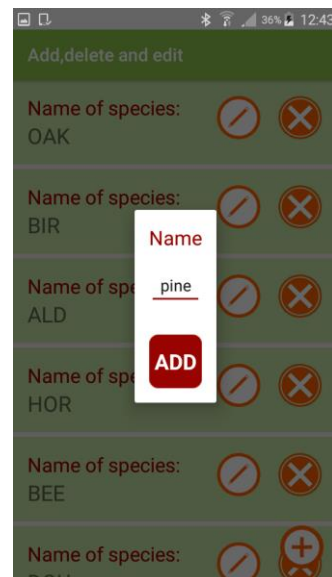
Adding new assortments / species



Measurement of standing trees



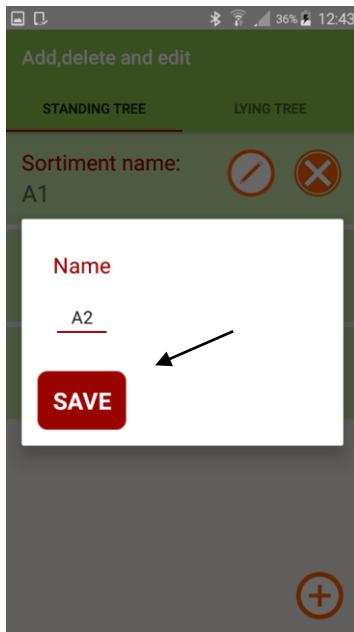
Measurement of lying tree



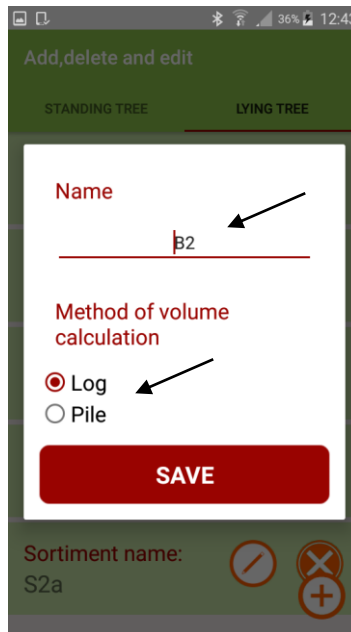
Species

Name of species and assortments enter from the keyboard of your smartphone. In the tree lying method must also specify method of volume calculation. After typing the name, click "ADD" Added assortments and species will be stored in the application memory.

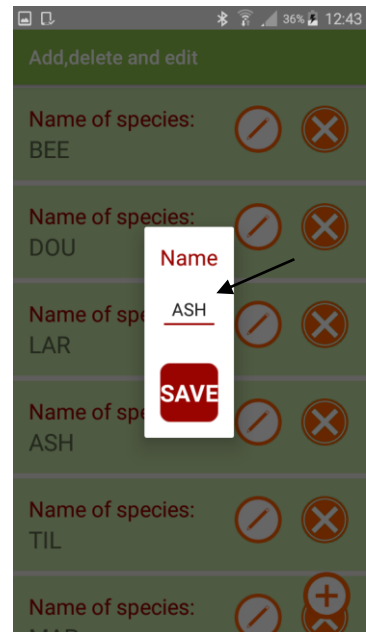
Edit existing assortments / species



Measurement of standing trees



Measurement of lying tree

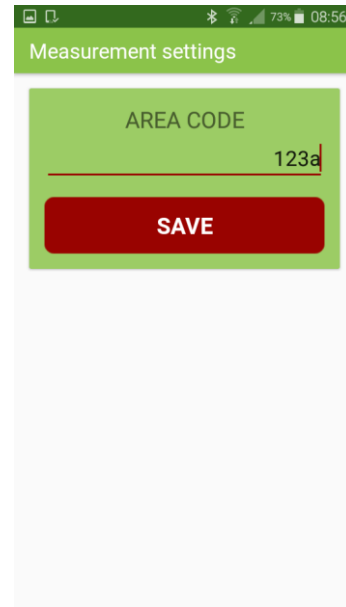
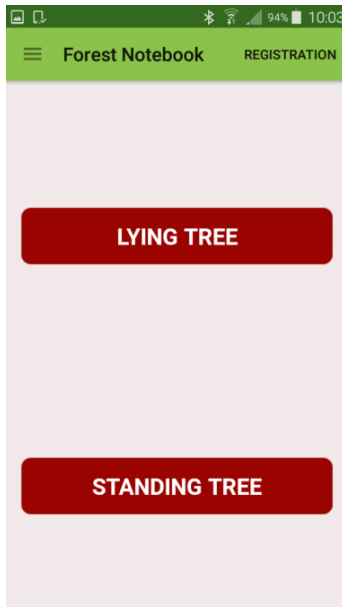


Species

During edition of assortments of standing tree and species, user can change them name. For lying assortments user can also change method of volume calculation. Data entering from smartphone keyboard. When data has been changed, click "save".

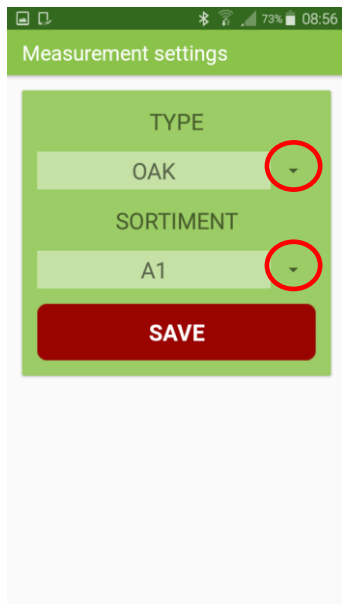
5. Measurements

Before taking measurements, specify the following attributes:

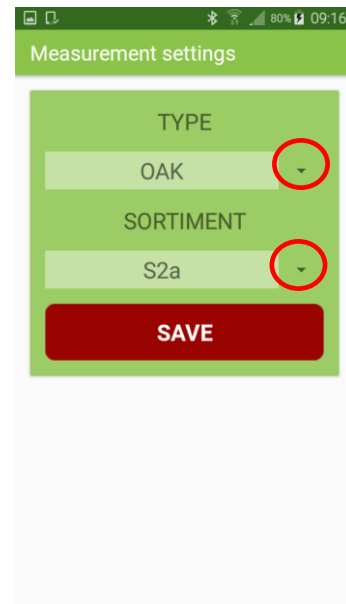


1. Select the method of measurement

2. Specify forest address, click „SAVE“



Measurement of standing trees



Measurement of lying tree

3. Select the species and assortment. Use circled symbols to show lists

Entering the measurements

New measurements should be entered from the smartphone keyboard. To hide the keyboard, click the "back button" on your smartphone. To enter new values should remove values from previous measurement then enter new. To save a measurement or add another new click „SAVE“.

New measurement

AREA CODE 123A
TYPE OAK
SORTIMENT A1

EDIT

No 1
DBH[cm] 52
Height[m] 28

SAVE

Measurement of standing trees

New measurement

AREA CODE 123A
TYPE OAK
SORTIMENT S2A

EDIT

No 4
Height[m] 1.82
Length[m] 1.20
Width[m] 5

SAVE

Measurement of lying tree

To change species or assortments during the measurement do the follow:

New measurement

AREA CODE 123A
TYPE OAK
SORTIMENT A1

EDIT

No 6
DBH[cm] 52
Height[m] 28

SAVE

1. Click "EDIT"
(regardless of method)

Measurement settings

AREA CODE 123a

SAVE

2. Click "SAVE"

Measurement settings

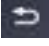
TYPE OAK

SORTIMENT A1
A2
WB1

SAVE

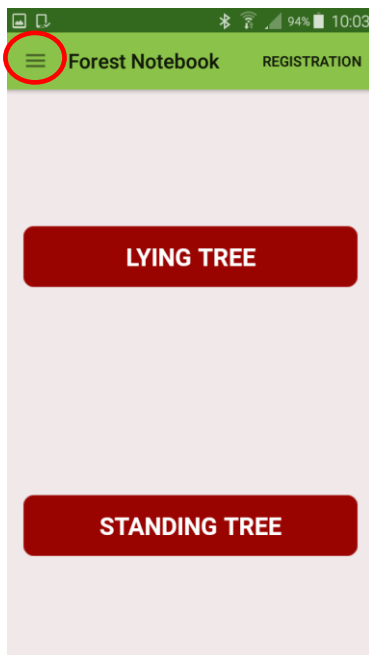
3. Change and choose new species, assortments (use circled symbols). Click "SAVE"

Ending the measurements / change the measurement method

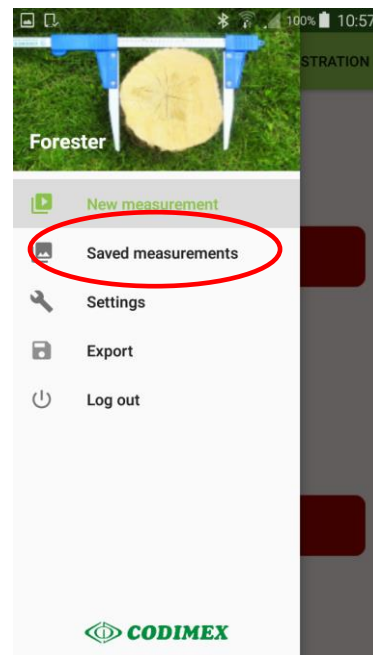
To change the measurement method during work, or exit the program must after last stored measurement click the "back button" on your smartphone. The most common symbol of the button is: . Single-click to exit to the main menu of application, double-clicking the button to exit from the application.

5.1 Summary, edition, deleting measurements

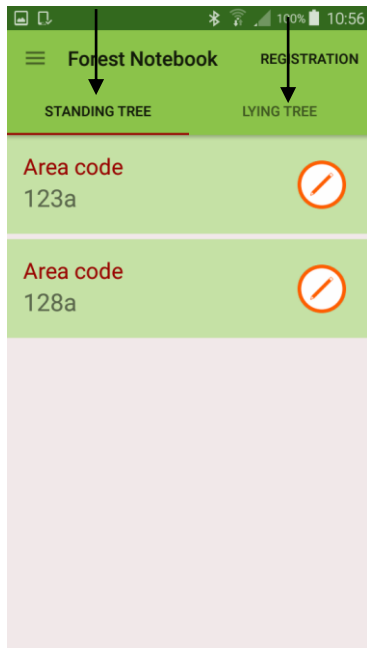
To verify recorded data, edit incorrect measurement (e.g. change diameter at breast height, diameter, height, species) or completely delete the measurements, follow these steps.




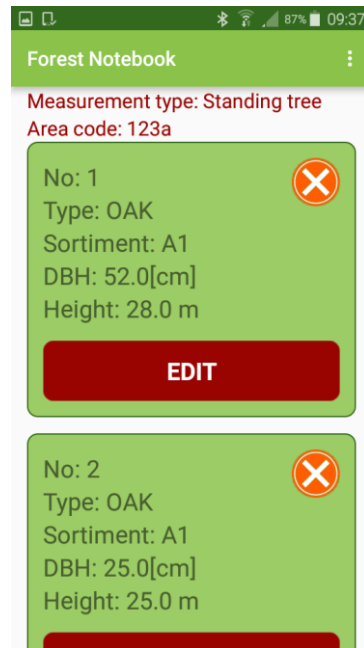
1. Enter to side menu




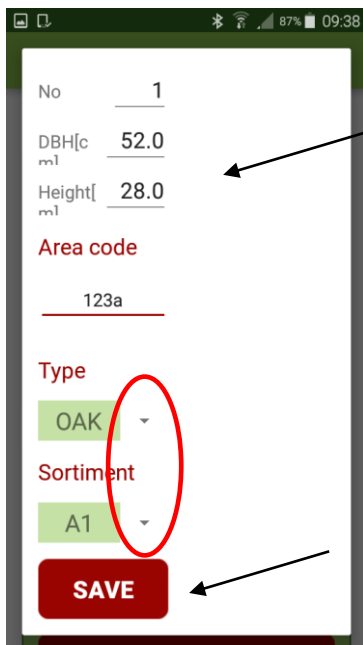
2. Enter to "Saved measurements"



3. Open measurement method section (arrows), find forest address, which want to check, edit or delete. Click symbol 



4. Find the measure (move vertically).
To edit, click "EDIT".
To delete click symbol 



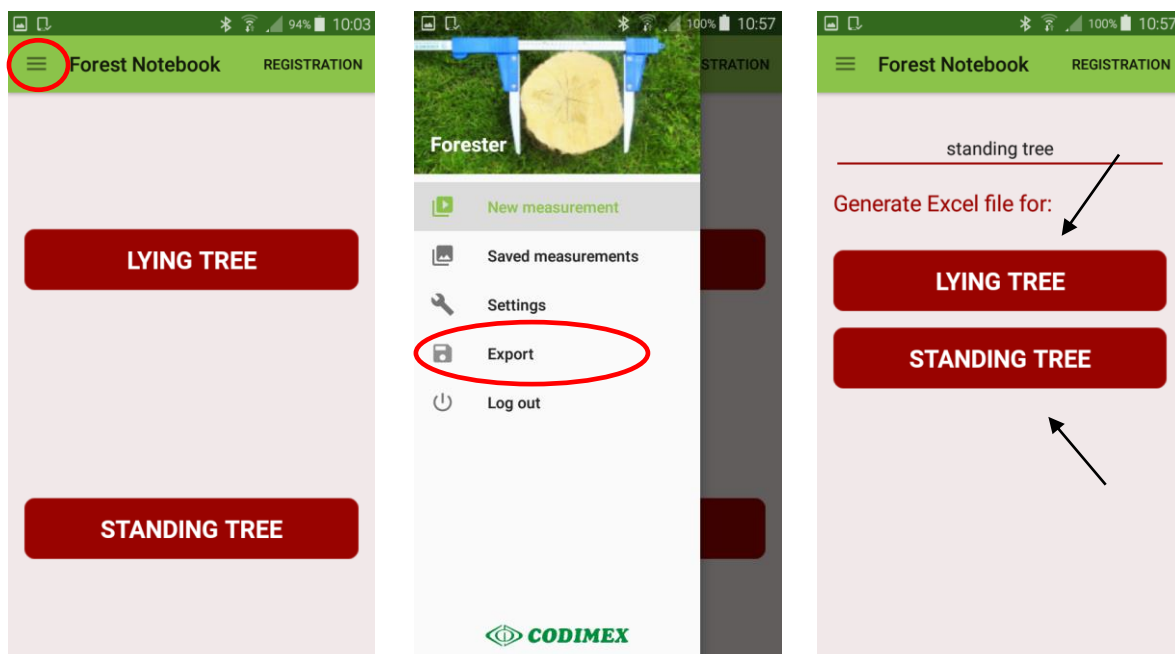
5. Edit: Change the required data. When You have changed, click "SAVE".

Warning! To delete the entire forest address, remove all measurements which are saved in it. To refresh the list of forest addresses, you must exit and re-enter section „saved measurements“

6. Export data

The application "Forest Notebook" allows to export data from all forest addresses into a one file (with the distinction between the method of measurement) and export from particular forest address. To perform the export data, follow the steps:

Manual of export data disaggregated on methods of measurement



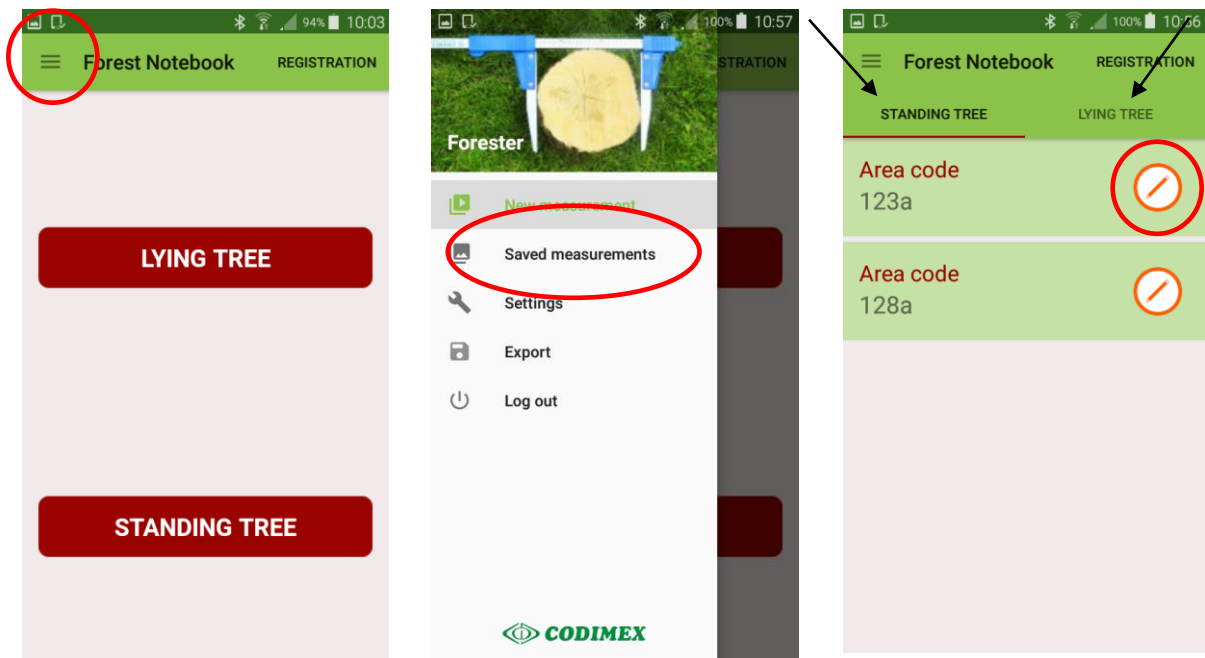
1. Enter to side menu

2. Enter to „Export“

3. Enter the name of the file (free user choice). Then click on method, from which want to export data.

Data exported. File location described in section 6.1

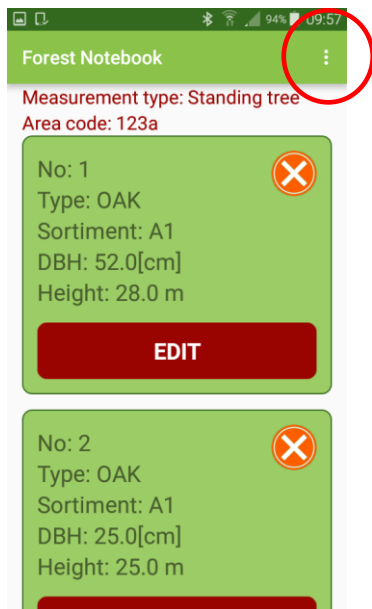
Manual of export data from individual forest address



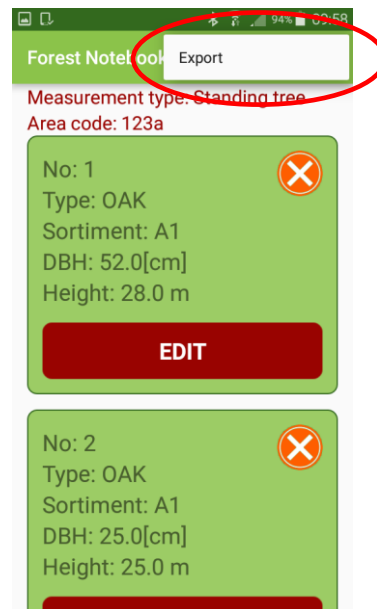
1. Enter to side menu

2. Enter to „Saved measures“

3. Open measurement method section (arrows), find forest address, which want to export, click circled button



4. Click circled symbol

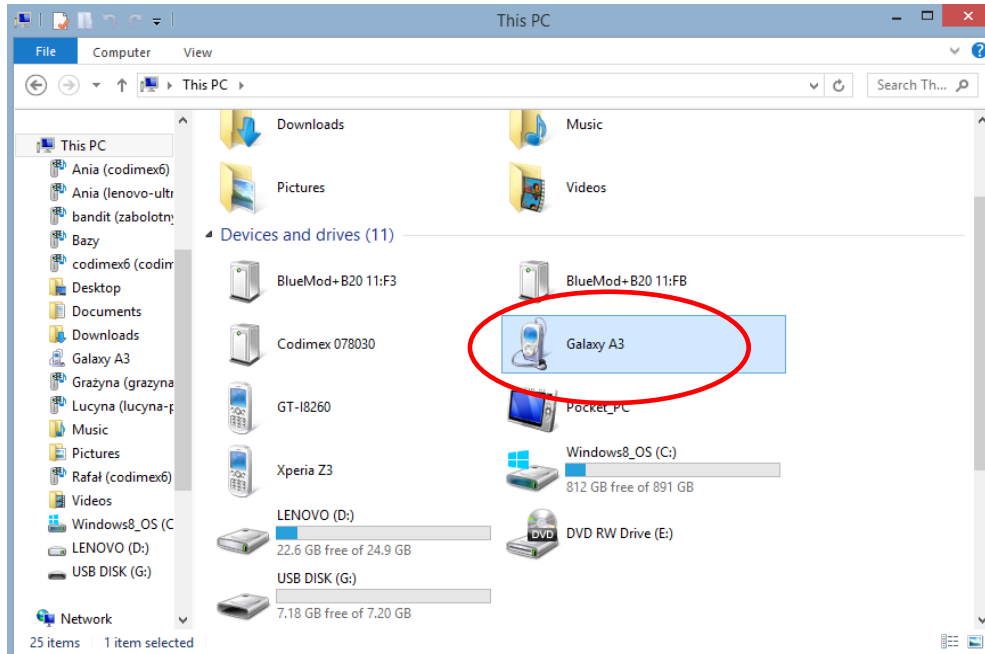


5. Click „Export“

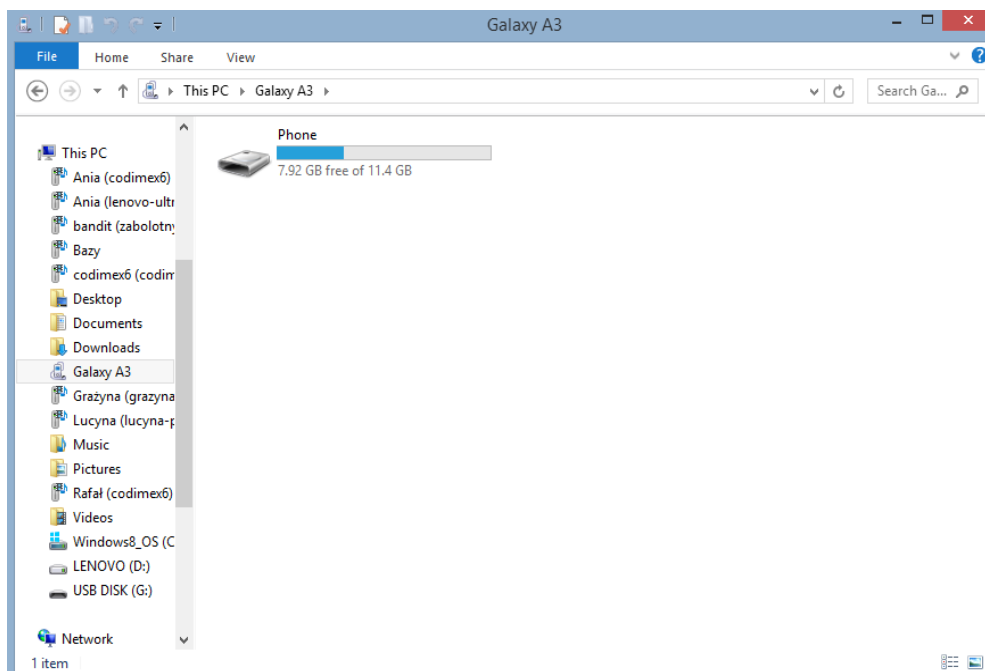
Data exported. File location described in section 6.1

6.1 Location exported files

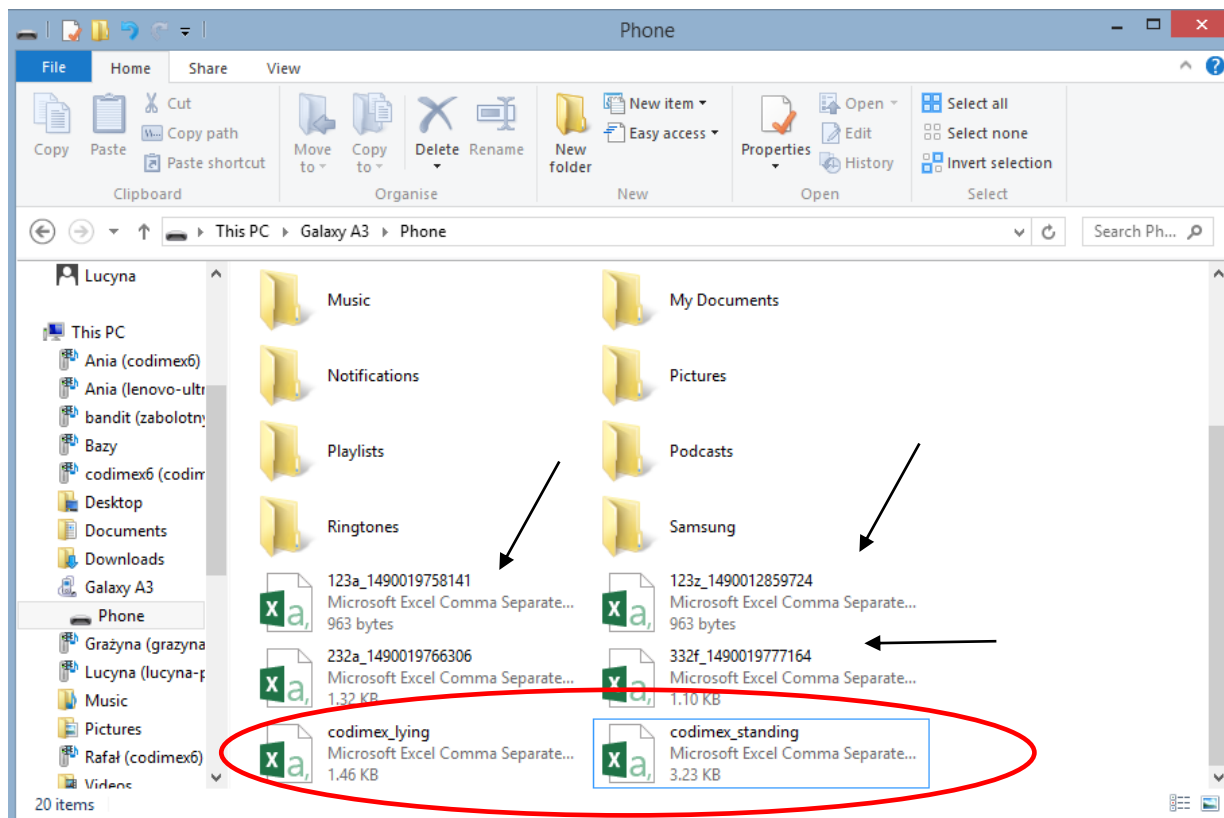
To locate and copy the exported files follow the steps:



1. Connect smartphone to computer.
 - Open on the desktop "My Computer."
 - In "My Computer" folder find name of smartphone.
 - Open the icon of smartphone.



2. Enter the smartphone, open the icon "Phone"



3. Find and copy the exported files.

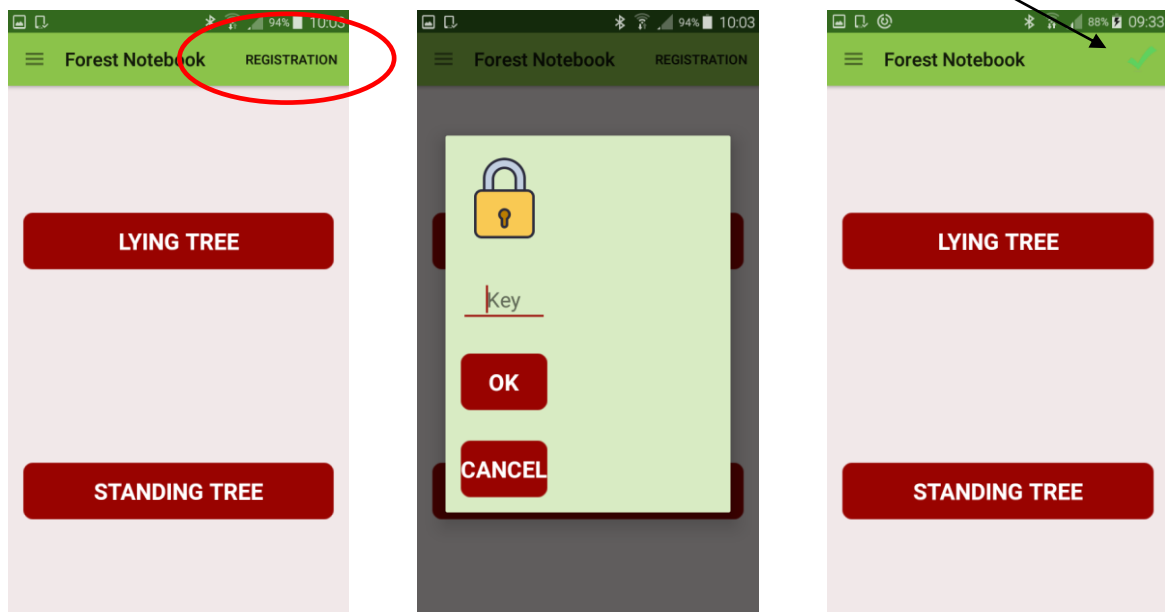
Exported files with the differences between the method of measurement are named "codimex_", and the second part is a name that has been given during export process in application. Here names "lying", "standing" (circled files).

Files exported from individual addresses have the same name as forest address from which they were exported and the second part is an automatic individual number (pointed by arrows).

The exported files copy and paste in the selected location on a user's computer.

All files that have been copied to a user computer can be deleted from the smartphone memory.

7. Activating full version



1. Click "REGISTRATION"

2. Enter the license key,
click "OK"

3. License Key verified
correctly. From this point
You have the full version of
the application.

The license key is located on the supplied pendrive in a file named "licensed_key.txt." It can also be obtained by calling the company CODIMEX on number +48228619445 or e-mail codimex@codimex.com.pl.

A license key is assigned to only one device – there is no possibility to register application on multiple devices using the same key.

Warning! During the activation process of license key, smartphone must be connected to Internet.

For further questions please contact:

e-mail: codimex@codimex.com.pl

tel. +48228619445